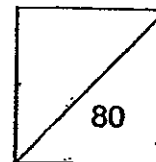




HENRY PARK PRIMARY SCHOOL
2012 SEMESTRAL EXAMINATION 1
SCIENCE
PRIMARY 3

Duration of Paper: 1 h 30 min



Name: _____ ()

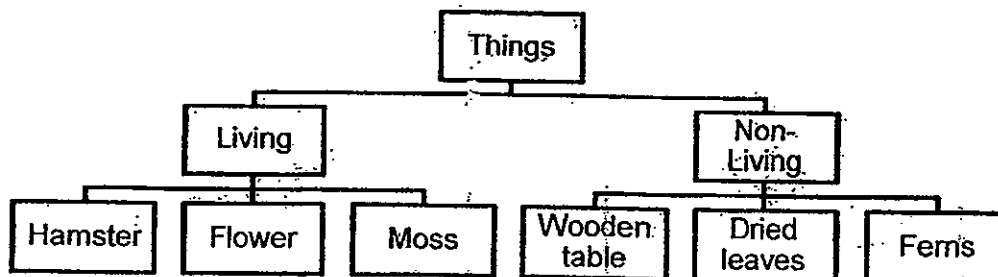
Parent's Signature _____

Class: Primary 3 _____

Section A: Multiple-Choice Questions (20 X 2 = 40marks)

For each question from 1 to 20, four options are given. One of them is the correct answer. Make your choice (1, 2, 3 or 4). Shade the correct oval (1, 2, 3 or 4) on the Optical Answer Sheet.

1. The classification chart below shows how some things are classified.



Which one of the following has been classified **wrongly**?

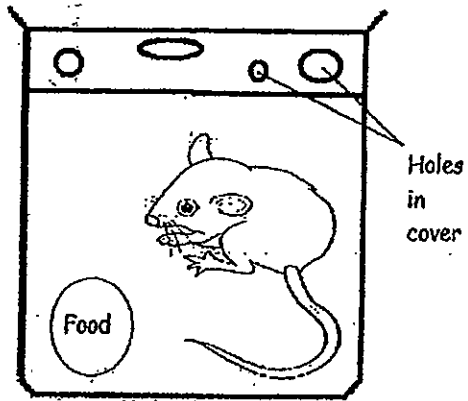
- (1) Flower
- (2) Hamster
- (3) Moss
- (4) Ferns

()

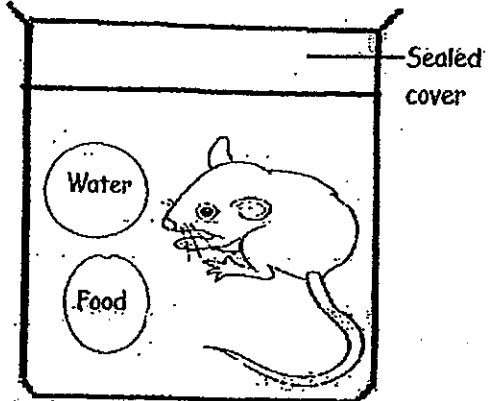


2. Which mouse would remain alive for the longest period of time?

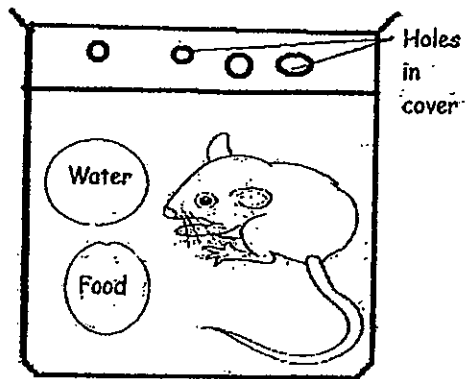
(1)



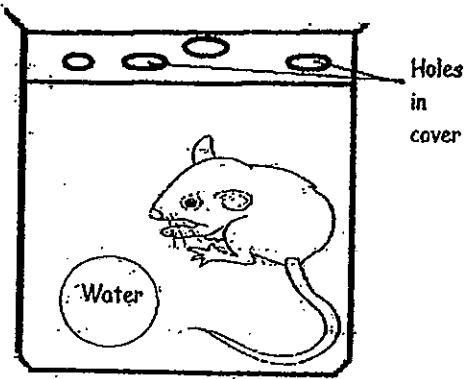
(2)



(3)



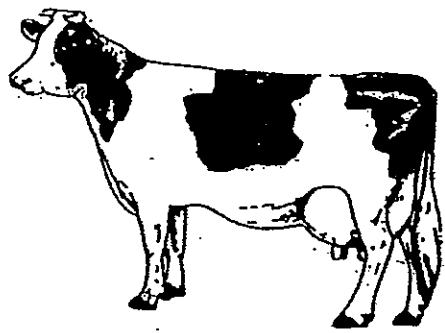
(4)



()



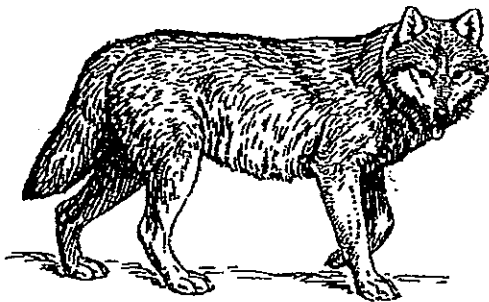
3. Xiao Chong decided to group the following animals into one group.



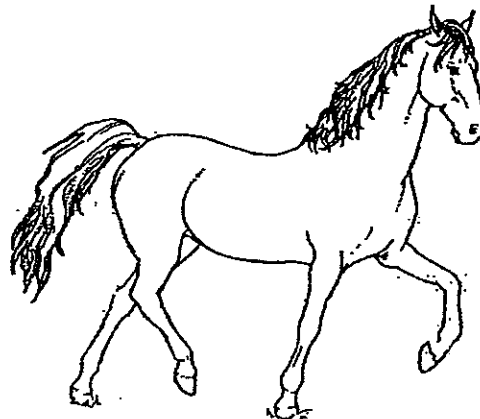
Animal A



Animal B



Animal C



Animal D

Mary said that Animal B should not be placed together with the rest of the animals.

Which one of the following statements explains why Mary is right?

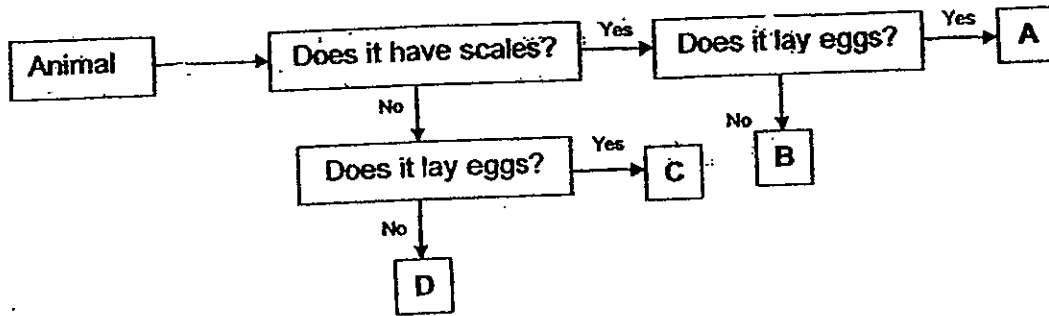
- 1) Animal B has wings but the other animals do not.
- 2) Animal B has hair but the other animals do not.
- 3) Animal B lay eggs but the other animals do not.
- 4) Animal B feeds it young with milk but the other animals do not.

()



The flow chart below shows the characteristics of Animals A, B, C and D

Answer Questions 4 and 5 based on the flow chart below



4. Which of the following is Animal A most likely to be?

- (1) A monkey
- (2) A horse
- (3) A salmon
- (4) A sparrow

()

5. How are the Animals A and B similar?

- (1) They both lay eggs
- (2) They both have scales.
- (3) They both do not lay eggs.
- (4) They both do not have scales.

()



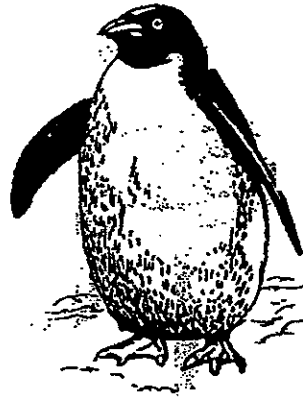
6. Which one of the following animals does not have the same body covering as the rest?

(1)



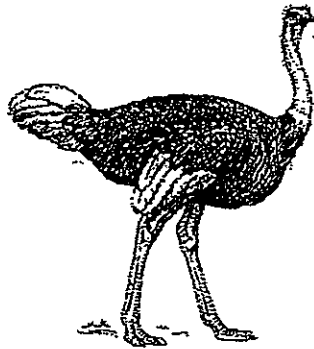
Baboon

(3)



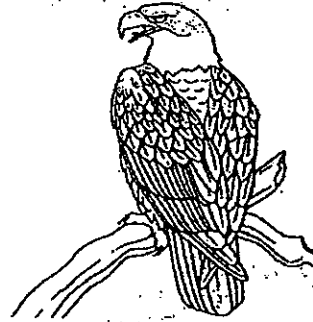
Penguin

(2)



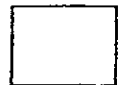
Ostrich

(4)

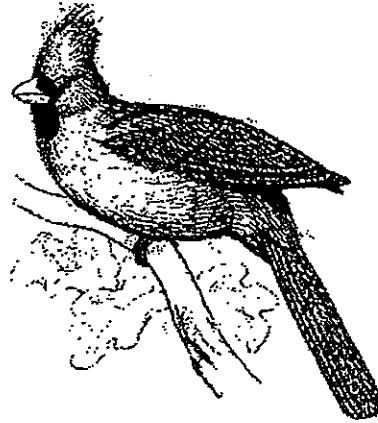
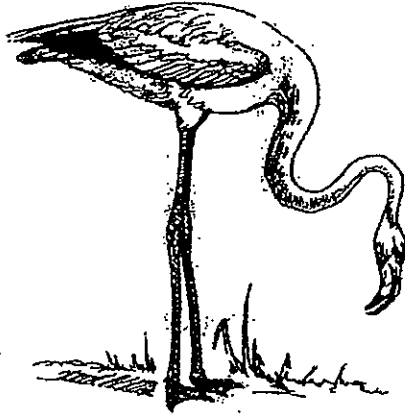


Eagle

()



7. The pictures below show 2 birds.



Which of the following characteristics show that the two birds are different?

- A: length of beak
- B: presence of feathers
- C: presence of wings
- D: length of legs

(1) B and C only

(2) A, B, and C only

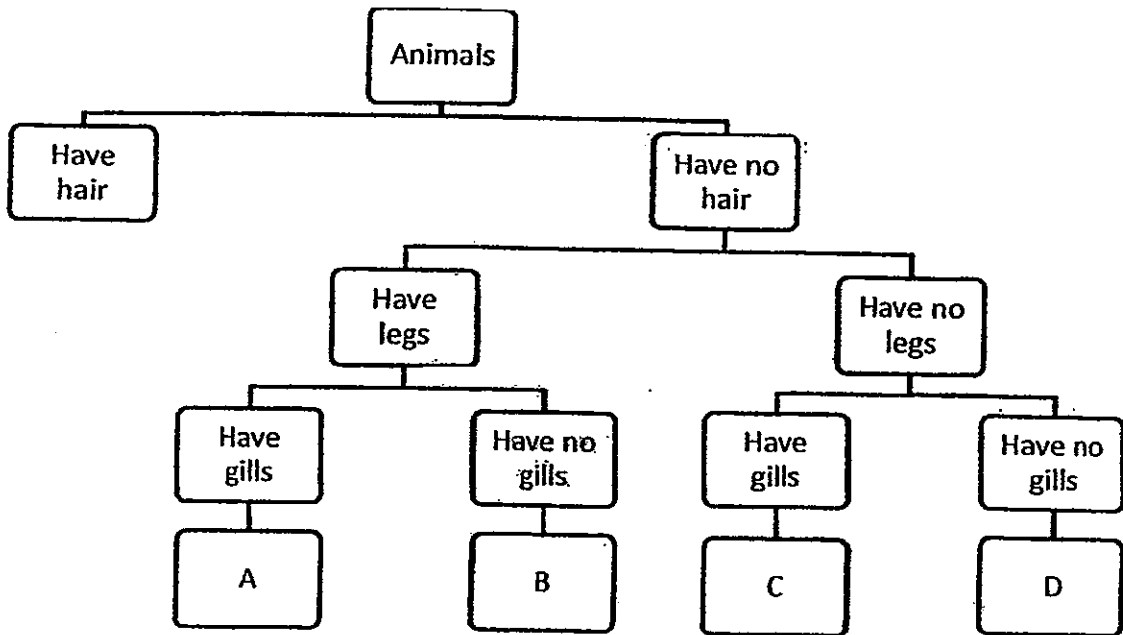
(3) A and D only

(4) A, C and D only

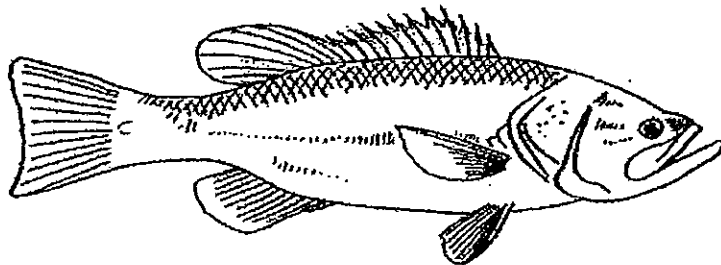
()



8. The classification chart below shows how Animals A, B, C and D are classified.



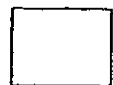
Which group will animal X be classified under?



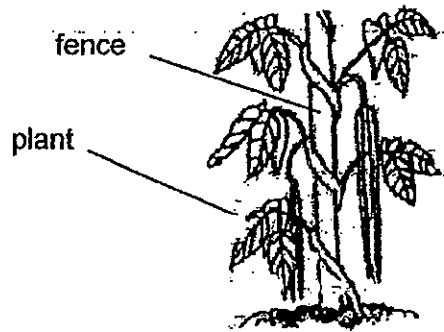
Animal X

- (1) Group A
- (2) Group B
- (3) Group C
- (4) Group D

()



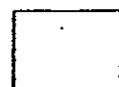
9. The diagram below shows a plant.



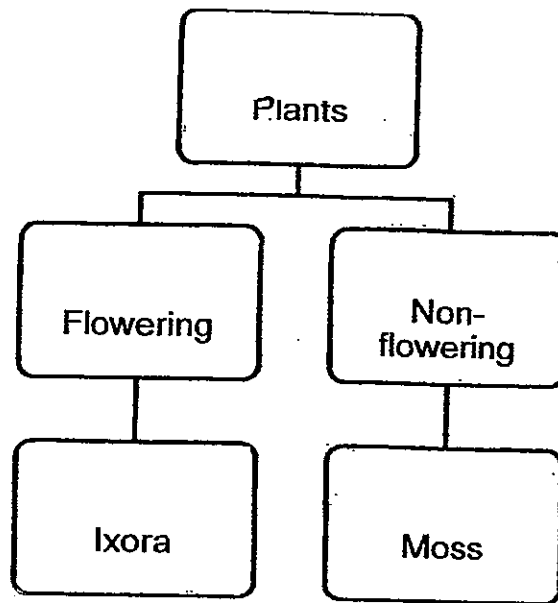
Why does the plant grow on the fence?

- (1) Its stem is long.
- (2) It needs to get more water.
- (3) It needs to reach up to more sunlight.
- (4) It needs to rest its heavy leaves on the fence

()



10. The classification chart below shows how some plants are classified.



Mark wanted to classify the following plants in the classification chart above.

Plant A: Reproduces by spores

Plant B: Reproduces by seeds

Plant C: Produces a red coloured fruit

Plant D: Produces flowers only in November

Which group do plants A, B, C and D belong to?

	Plant A	Plant B	Plant C	Plant D
(1)	Non flowering	Flowering	Flowering	Non flowering
(2)	Non flowering	Flowering	Non flowering	Flowering
(3)	Flowering	Flowering	Non flowering	Flowering
(4)	Non flowering	Flowering	Flowering	Flowering

()



11. Ferns and fungi are different in their ability to _____.

- (1) make their own food.
- (2) move around on their own.
- (3) reproduce their own kind
- (4) bear flowers

()

12. The leaves below are grouped according to their common characteristics.



Which one of the following leaves can be placed in this group?

(1)



(3)



(2)



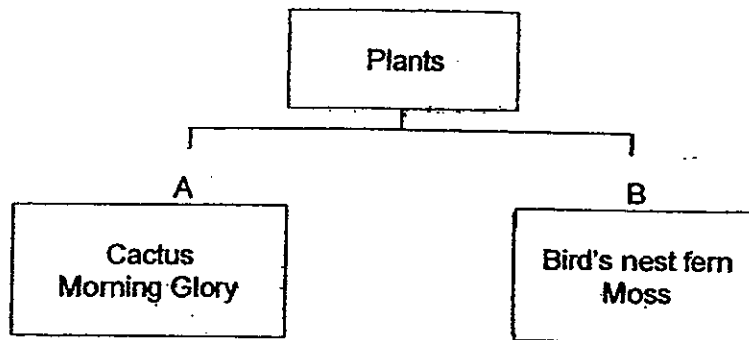
(4)



()



13. The classification chart below shows how some plants are classified.



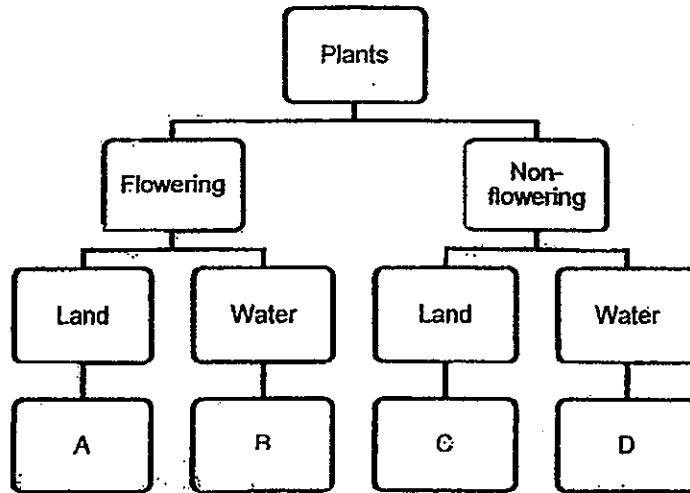
What are the suitable headings and examples for both groups A and B respectively?

	A	Example of plant in group A	B	Example of plant in group B
(1)	Flowering	Rose plant	Non-Flowering	Mosquito Fern
(2)	Non-Flowering	Staghorn fern	Flowering	Orchid
(3)	Non-Flowering	Pine tree	Flowering	Sunflower
(4)	Flowering	Ladder fern	Non-Flowering	Hibiscus

()



14. The following classification chart shows some information on Plants A, B, C and D



Siti found a plant in the garden and made these observations.

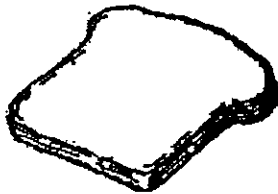
- Has spores - Grows on land

Based on the information given in the table, which plant has she found?

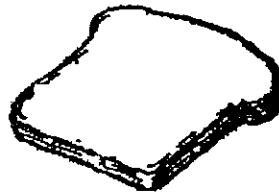
- (1) A
- (2) B
- (3) C
- (4) D

()

15. Joanne had two slices of bread. She toasted Bread A and sprinkled a few drops of water only on Bread B. Both Bread A and Bread B were left on a plate at the balcony. The two pieces of bread were left untouched for 6 days.



Bread A
bread that had been toasted



Bread B
bread with drops of water

What would Joanne most likely observe at the end of the 6th day?

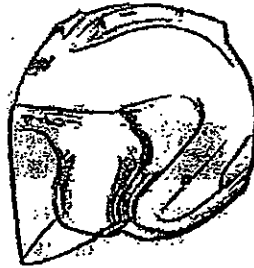
- (1) There were no changes observed in both pieces of bread.
- (2) There were more black and green patches on Bread A than Bread B.
- (3) There were black and green patches found on Bread B but not on Bread A.
- (4) There were black and green patches were on Bread A but not on Bread B.

()



19. A factory has been asked to make a motor-cycle helmet that meets the following requirements.

- Helmet must be able to keep the rider's head dry during rainy days.
- Helmet must be able to protect the rider's head.

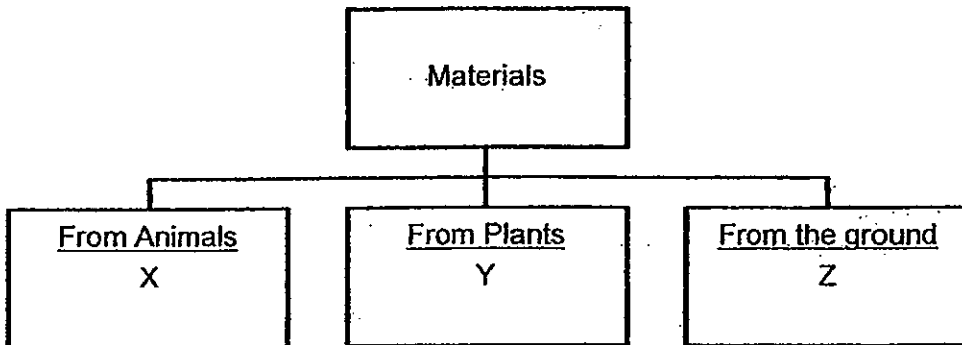


Which 2 properties must the material chosen to make the helmet have?

- (1) Waterproof and flexible
- (2) Waterproof and strong
- (3) Hard and strong
- (4) Flexible and strong

()

20. The classification chart below shows how some materials are classified.



Which of the following does X, Y and Z represent?

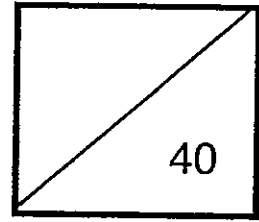
	X	Y	Z
(1)	wool	wood	rubber
(2)	silk	plastic	leather
(3)	cotton	rubber	iron
(4)	leather	cotton	gold

()

End of Booklet A



**HENRY PARK PRIMARY SCHOOL
2012 SEMESTRAL EXAMINATION I
SCIENCE
PRIMARY 3**



Name: _____ ()

Class: Primary 3 _____

Section B: 6 Structured Questions (12 marks)

Write your answers to questions 21 to 26 in the spaces given.

21. The table below shows the height of 2 things, X and Y, over 4 years.

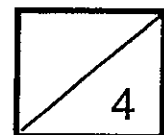
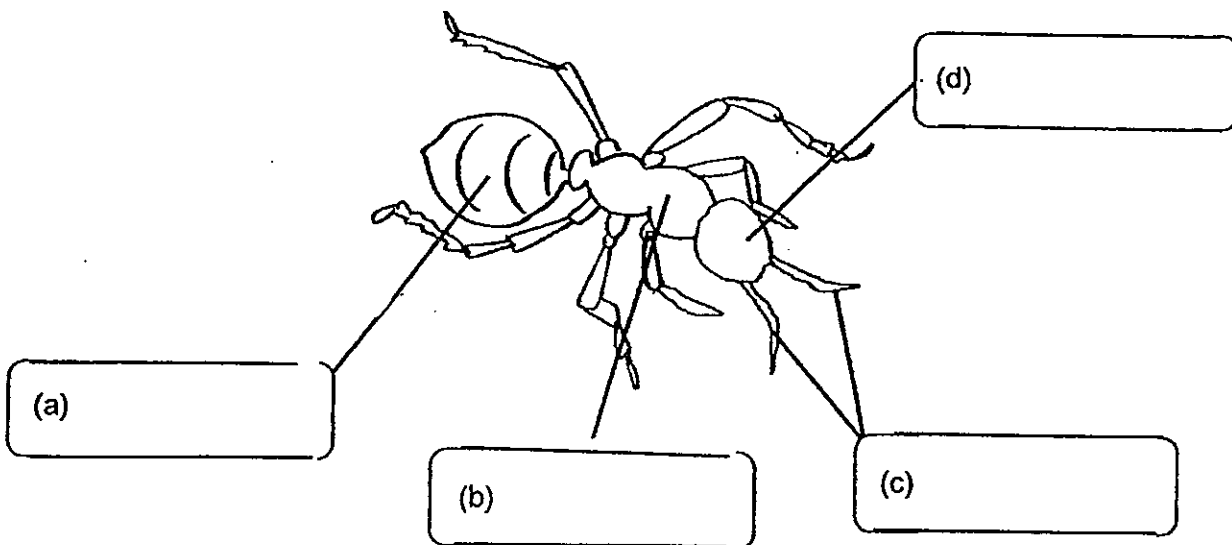
	1 st year	2 nd year	3 rd year	4 th year
Height of X	60cm	70cm	79cm	91cm
Height of Y	60cm	60cm	?	60cm

(a) What would the height of Y be in the 3rd year? (1m)

_____ cm

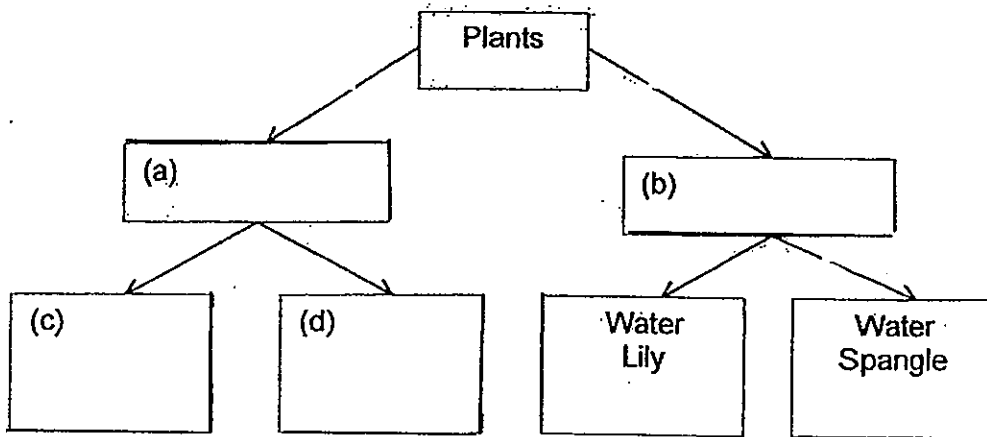
(b) Based on the table above, is X or Y more likely to be a living thing? (1m)

22. Label the parts of the ant below. (2m)



23. Fill in the empty boxes in the classification table with the helping words below.

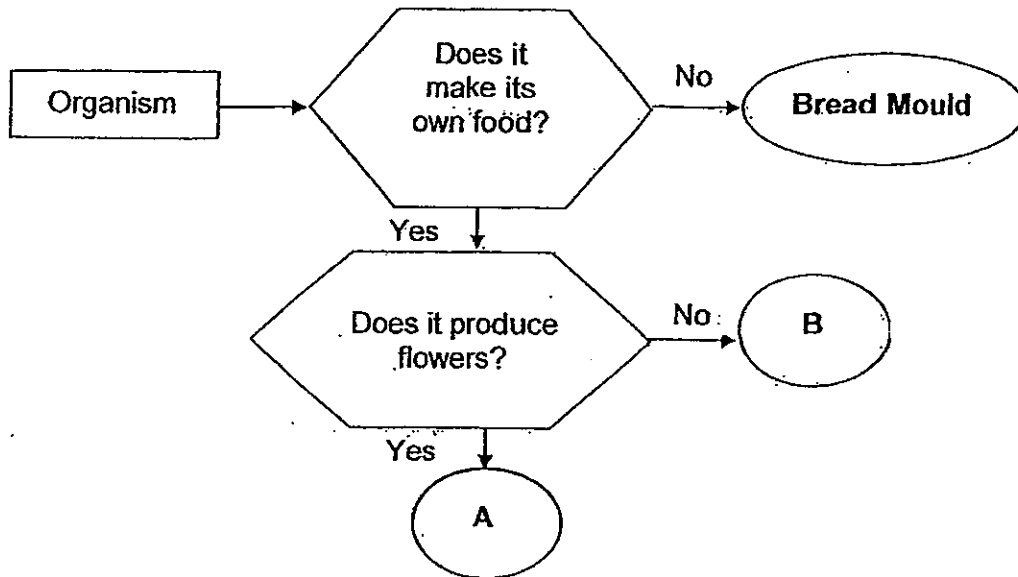
Land Plants	Bird's Nest Fern
Water Plants	Orchid



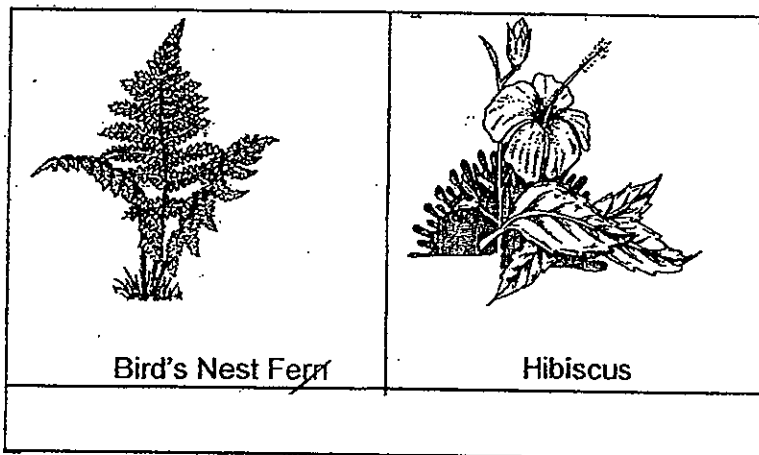
(2m)



24. The chart below shows the characteristics of organisms A and B.



Match the letters (A and B) to the pictures given by writing the correct letters in the boxes below. (2m)



25. Tick (✓) the statements in the correct column.

(2m)

Statements	True	False
All bacteria are harmful to us.		
We can stop bacteria from causing us to get sick by washing our hands.		
We can see how a single bacteria looks like with our naked eyes.		
We need to use a microscope to look at microorganisms.		

26. Sara wanted to find out about the properties of materials W, X, Y and Z. She carried out some simple activities with the 4 materials and recorded her observations in the table below.

Properties observed	Materials			
	W	X	Y	Z
Strong	✓			✓
Hard	✓	✓		
Flexible	✓		✓	✓
Able to float in water		✓		✓

Based on the information from the table above, answer the following questions.

Which of the materials, W, X, Y or Z, is described in the statements below?

(2m)

Write W, X, Y or Z in the correct blanks below.

a) Material is flexible but not strong.

b) Material is strong but does not float in water.

c) Material is hard but not flexible.

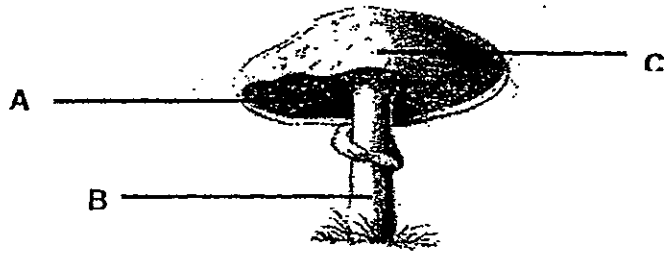
d) Material floats in water but is not hard.



Section C: Open-Ended Questions (28 marks)

Write your answers to questions 27 to 34 in the spaces given.

27. The diagram below shows a mushroom.



Write down the correct letters, A, B or C that represents the following parts of the mushroom in the blanks below.

- a) Gills: _____
- b) Cap: _____
- c) Stalk: _____

(3m)

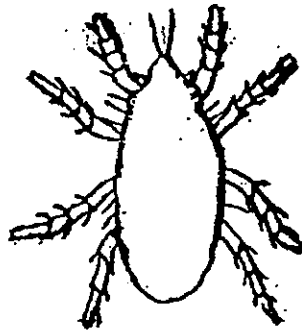


28. Some pupils went to Bukit Chanda for an excursion.

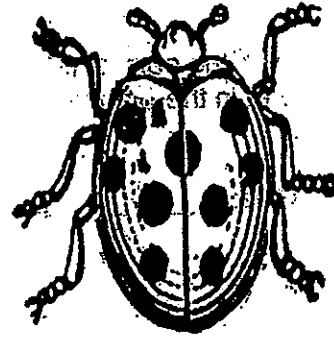
During their excursion, they caught animals A, B, C, D, E and F shown in the diagram below.



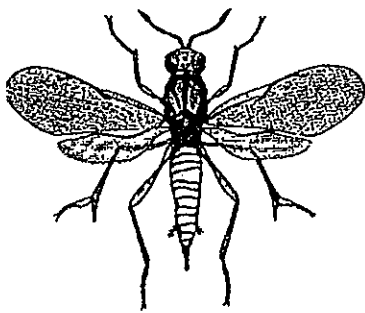
A



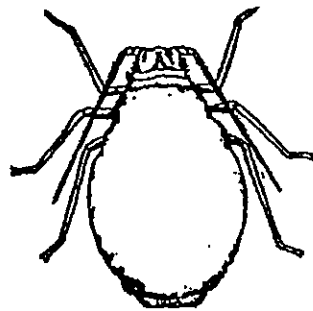
B



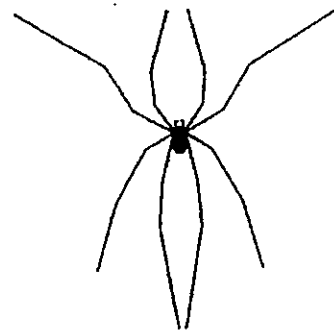
C



D



E

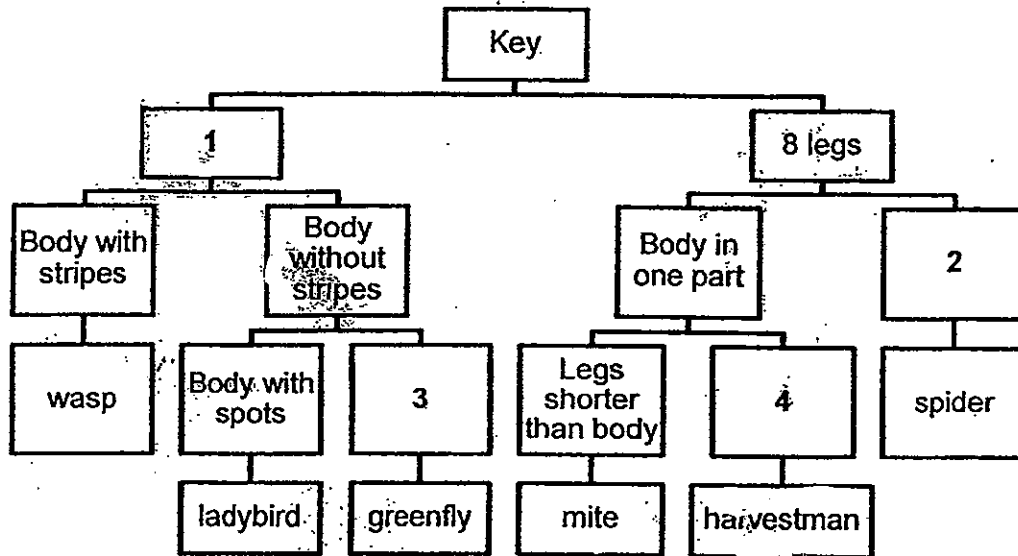


F



Question 28 continued

The pupils classified the organisms A to F (on page 20) as shown in the classification chart below.



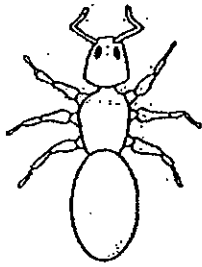
a) Study the diagram carefully and complete the chart by writing down what 1, 2, 3 and 4 represent. (2m)

- 1: _____
- 2: _____
- 3: _____
- 4: _____

b) Using information from the chart above, identify and write down the names of the animals A, B, D and F in the blanks below. (2m)

- A: _____
- B: _____
- D: _____
- F: _____

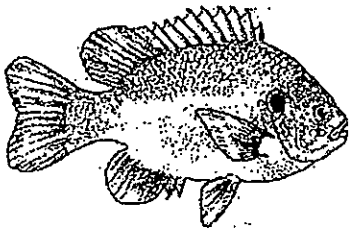
29. Observe the pictures of animals below.



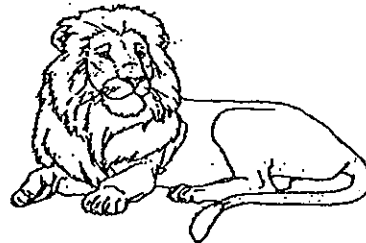
Animal W



Animal X

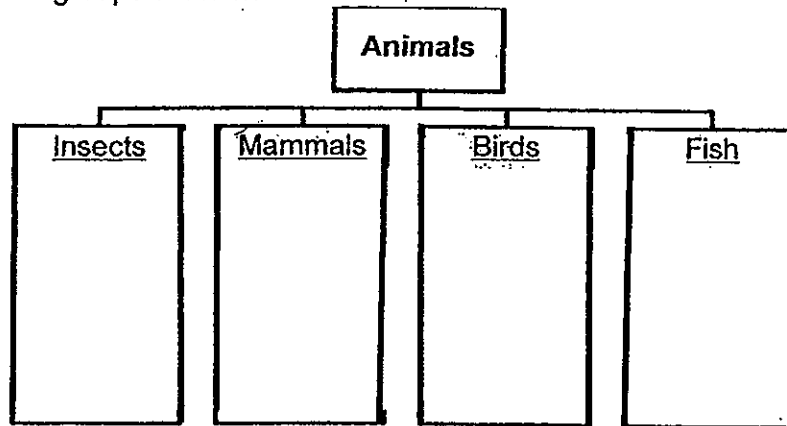


Animal Y



Animal Z

- (a) Use the classification chart below to classify the animals, W, X, Y and Z, into the correct groups of animals. (2m)

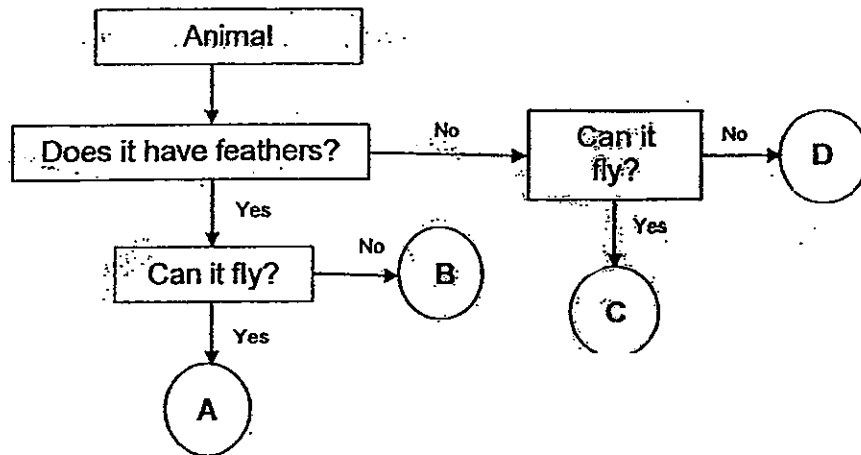


- (b) In which group will you put humans in? (1m)

- (c) Explain your answer in (b) (1m)



30. Study the flow chart below and answer the questions that follow.

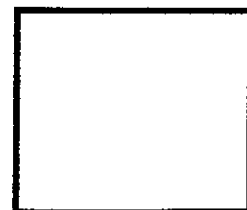


(a) An eagle is a bird that can fly. Explain why animal C cannot be an eagle. (1m)

(b) State a common characteristic between animals A and C. (1m)

(c) Give an example of animal A. (Do not mention eagle) (1m)

(d) Which letter, A, B, C or D represents a penguin? (1m)



31. Study the diagrams of the 2 organisms below carefully.



fern



mushroom

- (a) Sam wants to classify both organisms shown above as plants. Is he correct? Explain your answer. (2m)

- (b) Based on the diagram above, state one similarity in the way the organisms above reproduce. (1m)

Study the diagram of Plant Q below carefully.

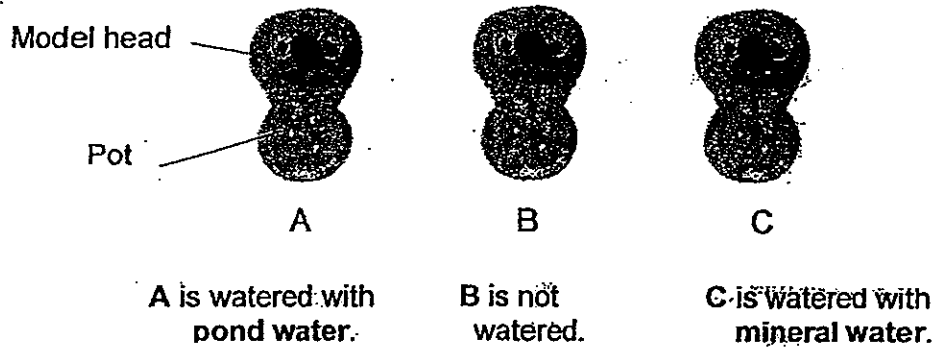


Plant Q

- (c) Does plant Q reproduce in the same way as the fern and the mushroom? Explain your answer. (1m)



32. May mixed grass seeds with soil. She put the mixture into 3 socks to make 3 model heads. She soaked two of the socks in different types of water. Then she placed each model head on a pot as shown below.

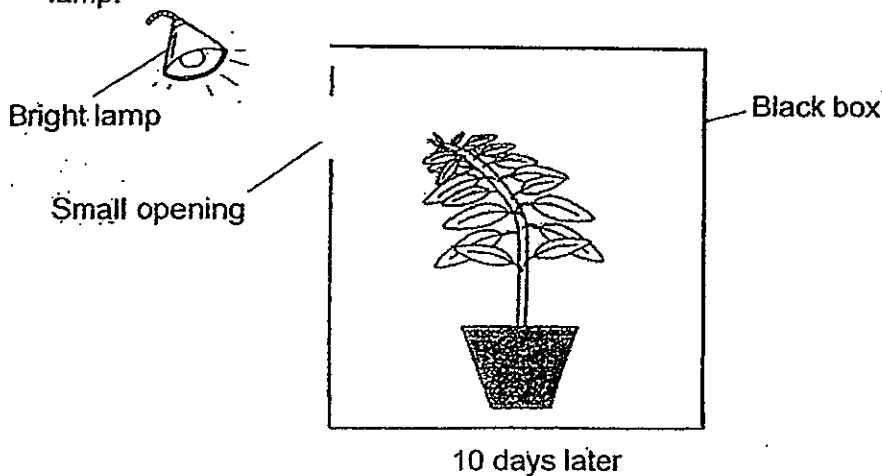


(a) In which two model heads (A, B or C) would grass be growing? (2m)
Write down the letters.

_____ and _____

(b) Give a reason for your answer. (1m)

(c) A potted plant is kept inside a black box with a small opening facing a bright lamp.

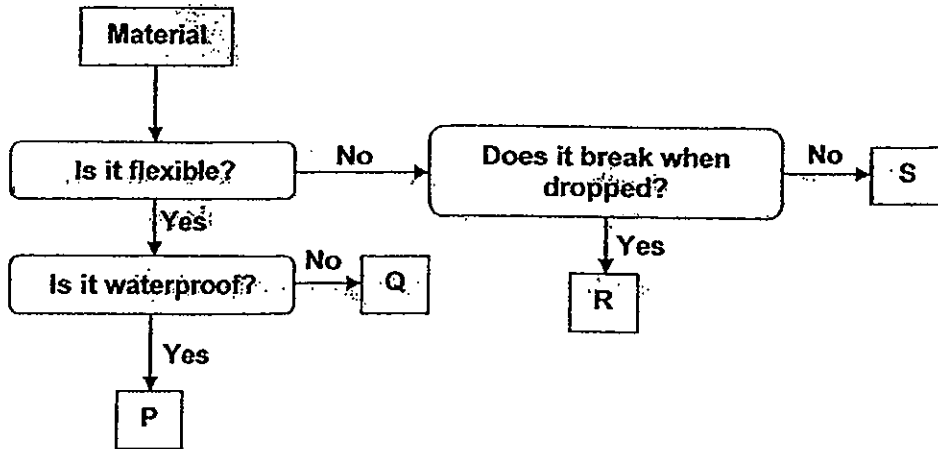


The diagram above shows what has happened to the plant as it continues to grow over the 10 days. (1m)

Name one other characteristic of living things is shown by plant in the diagram. (*Do not mention: Living things grow*)

Living things _____

33. Study the flow chart below.



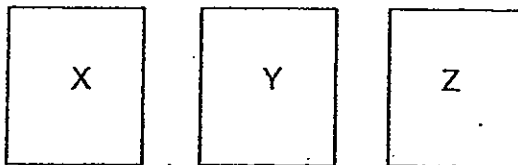
Based on the flow chart above answer the following questions.

Can Material Q be used to make a raincoat? Explain why.

(2m)



34. There are three pieces of fabric, X, Y and Z, on a dry table cloth. 5 ml of water is poured slowly onto each fabric.



The table below records the observations.

Fabric	Observation
X	Water seeps through fabric X and the table cloth under it becomes wet.
Y	Water seeps into fabric Y but the table cloth under it remains dry.
Z	Water does not seep through it or into it but remains there on the fabric Z and the table cloth under it remains dry.

Study the table above and answer the questions that follow.



- (a) Which fabric is the most suitable for making part A of an umbrella? (1m)
-
- (b) Give a reason for your answer in (a). (1m)
-
- (c) Fabric Y is **most suitable** to make a bath towel. (1m)
Explain why the fabric is **most suitable**.
-
-

End of Booklet C

Setters:
Miss Soh Lin Hui
Mdm Noor Azida





ANSWER SHEET

EXAM PAPER 2012

SCHOOL : HENRY PARK
SUBJECT : PRIMARY 3 SCIENCE

TERM : SA1

Q1	Q2	Q3	Q4	Q5	Q6	Q7	Q8	Q9	Q10	Q11	Q12	Q13	Q14	Q15	Q16	Q17
4	3	1	3	2	1	3	3	3	4	1	3	1	3	3	4	1

Q18	Q19	Q20
2	2	4

21)a)60cm.

b)X is more likely to be a living thing.

22)a)abdomen b)head c)feelers d)thorax

23)a)Land Plants b)Water Plants c)Orchid d)Bird's Nest Fern

24)B / A

25)F T F T

26)a)Y b)W c)X d)Z

27)a)A b)C c)B

28)a)1)6 legs 2)Body in tow parts

3)Body without spots 4)Legs longer than body

b)A: spider

B: mite

C: wasp

d)harvestman

- 29) a) animal W animal Z animal X animal Y
b) Mammals.
c) Humans give birth to life young.
- 30) a) Animal C does not have feathers.
b) Animal A and C can both fly.
c) Hummingbird.
d) The letter B.
- 31) a) No. The fern makes its own food while a mushroom feeds on decaying matter.
b) The organisms reproduce by spores.
c) No. Plant Q produces flowers which means the plant reproduces by seeds.
- 32) a) A and C.
b) A and C were both watered.
c) respond to changes.
- 33) No. Material Q is not waterproof.
- 34) a) Material Z.
b) Material Z is waterproof.
c) Material Y absorbs water the best .
/ Material Y absorbed the most water.